

Channel Islands, Cherbourg Peninsula & North Brittany

1st combined edition 2015
ISBN 978 18462 344 39

Supplement No.3
May 2017

This replaces all previous supplements



Caution

Every effort has been made to ensure the accuracy of this supplement. However, it contains selected information and thus is not definitive and does not include all known information on the subject in hand. The authors, the RCC Pilotage Foundation and Imray Laurie Norie & Wilson Ltd believe this supplement to be a useful aid to prudent navigation, but the safety of a vessel depends ultimately on the judgement of the navigator, who should assess all information, published or unpublished, available to him/her.

With the increasing precision of modern position fixing methods, allowance must be made for inaccuracies in latitude and longitude on many charts, inevitably perpetuated on some harbour plans. Modern surveys specify which datum is used together with correction figures if required, but older editions should be used with caution, particularly in restricted visibility.

This supplement contains amendments and corrections sent in by a number of cruising yachtsmen and women, in addition to those culled from official sources such as *Notices to Mariners*.

Note where details have been modified in this text do please remember to alter them on the appropriate plan.

This Supplement is cumulative. The most recent information is printed in blue.

Author's Caution

It must be emphasised that none of the charts, plans or sketch plans shown in this guide should be used for navigation, nor should they be in any way considered as substitutes for the official charts and other nautical reference materials which every vessel is obliged by international law to have on board.

In some places plotters can provide more detail than charts (depending on which chart series you are using). However it should not be forgotten that electronic components do fail and GPS satellites can be damaged by meteorites etc, or compromised by cyber interference. Thus the paperless navigator could be placing his vessel in danger in these complex rocky areas.

You will see many locals outside the marked channels but your insurance company may not be so impressed.

Page viii Acknowledgements

Channel Islands Add: Ian Tardivel, Grève de Lecq boat owners.

Page 2 Introduction Charts

Delete: 'A red asterisk indicates author's preference'

Page 3 Introduction

Insert new paragraph section:

AIS (Automatic Identification System)

AIS enables monitoring of other nearby AIS equipped vessels that may pose a collision risk. Increasingly lights, buoys and other navigation aids are fitted with AIS transmitters. This VHF system transmits and receives data on a vessel's position, course, speed, identity and status – under power or sail, constrained by draught, restricted, not under command.

I. Channel Islands

Page 5 History

Final sentence - delete exclamation mark and add: 'but Jersey has introduced GST (Goods and Services Tax). This is currently (2017) 5%.'

Page 8 Sources of weather information

CROSS JOBOURG 'For area Cap de la Hague to Pte de Penmarc'h' should read 'For area Cap d'Antifer to Mont St Michel.'

Add: CROSS CORSEN Ch 79 0815, 2015 (LT).

For area Mont St Michel to Pte de Penmarc'h

Jersey Met Services

Amend website to www.gov.je/weather

The recorded phone number now costs 60p per minute.

Page 10

Tidal Coefficients

Final Paragraph: missing text should read '...when it is less than 70'.

Formalities and regulations

Under this heading add:

Passports are required for entry into the Channel Islands. On arrival in France you may, in addition, be required to show proof of competence in the form the International Certificate of Competence (ICC) which should be endorsed for 'inland waters' if entry into French canals is planned. Ships Papers should include Certificate of Registration, Certificate of Insurance, proof of VAT status and, if the yacht is chartered, a copy of the charter contract.

Page 11 Search and rescue

Channel Islands Air Search At end of section add:
www.ci-airsearch.com

After section **Channel Islands Air Search** add:
FRENCH SAR is coordinated by CROSS centres (Centre Régional Opérationnel de Surveillance et de Sauvetage) with 24hr watch on VHF ch 16 and DSC.

The French lifeboat service is operated by SNSM (Société Nationale de Sauvetage en Mer).

Page 12 Internet services Jersey, Guernsey & Cherbourg Peninsula Delete section – out of date. Replace as follows:
Internet services, WiFi

Guernsey WiFi is enabled in Victoria Marina and elsewhere in the Port. A password issued to visitors on arrival is required to access the system. Internet facilities are available at Guernsey Information Centre, St Peter Port library and the Harbour Office.

Jersey Jersey Marinas supply complimentary WiFi throughout the port. Follow onscreen directions to register for free access. Internet access is available at the Marina Office, Post Office and public library

France WiFi is available in all major ports and marinas but may require an external antenna where the signal is weak. A code to gain access is issued on receipt of payment of dues.

At end of Cherbourg Peninsula section amend technical support details to: NetABord ☎ +33 2 97 56 57 97

Page 13 Collision avoidance

Add: See AIS (Automatic Identification System) P3.
Amend lines 3,4, final para to: ‘...1,300 feet long and steaming at up to 20 knots in good visibility.’

Page 15 Crossing from the south Eastabout the Minquiers(36M)

At end of section add new paragraph:
Coq passage This route E of Les Minquiers saves a few miles. It is frequently used by high speed ferries when there is 7m or more rise above Chart Datum. Stay on the 2°W meridian and you will pass, N–S, 0.4M E of N Minquiers buoy, 0.8 M E of Le Coq bn and 200m E of SE Minquiers buoy. See page 139. (Chart BA 3656)

Page 23 Alderney Local Information

Car and bike hire Add:

Braye Hire Cars ☎ 823881

Bicycle Hire: Cycle and Surf ☎ 822286

Page 25 Alderney Plan - Alderney main approaches

Amend range of Quenard Pt lighthouse to 12M.

Page 27 Alderney Alderney Race

OVERFALLS

Middle line 1: 2.5m should read ‘2.5M’ (miles not metres).

Page 28 Alderney Plan - Entry to Braye harbour Alderney

Amend range of Quenard Pt lighthouse to 12M.

Page 43 Guernsey Local information

Navigational aids S breakwater RDF beacon discontinued.

Useful telephone numbers Customs ☎ 741400

Add Guernsey Sailing Trust ☎ 710877

Page 45 Guernsey Plan - Guernsey main approaches and round island Delete Platte Fougère horn.

Page 51 Guernsey Victoria Marina and the Pool

Approach and entry After ‘...to the shore by a walkway.’ add: ‘There are no powerpoints on the walk ashore pontoons in the Pool (2016).’

Signals At end of ‘Shelter’ add: ‘The Marina Office is manned 0600–2200 throughout the year.’

Page 53 Guernsey Plan - Beaucette Delete Platte Fougère horn.

Page 56 Guernsey Plan - Guernsey northeast corner

Delete Platte Fougère horn.

Page 58 Guernsey St Peter Port north to Fort Doyle

G13 Line 3 after ‘is regained’ reword sentence to read: ‘...or, if this is no longer visible, when the next transit is seen astern.’

Page 71 Herm Local Information

SUPPLIES AND SERVICES

Restaurants Add:

The White House Hotel and Ship Restaurant ☎ 710075

The Boaters Restaurant ☎ 750050

Page 78 Herm Transit H16

Delete reference to H14.

Page 87 Sark Local Information

SUPPLIES AND SERVICES Add:

Sark Cycle Hire ☎ 07781 454375

Stocks Hotel ☎ 832001

La Sablonnerie Hotel ☎ 832061

Page 101 Sark Port a la Jument

After ‘Exposed to NW’ add: ‘but potentially sheltered from SW’lies by Brecqhou.’

After **Havre Gosselin**, insert new anchorage:

Port es Saies A sandy anchorage with good holding but exposed to W. A steep cliff path leads to the top.

Page 103 Jersey Local Information

Useful telephone numbers Add:

Customs and Immigration ☎ 448000

Amend: Jersey Tourism ☎ 859000

Add: **Yacht Clubs** St Helier Yacht Club, South Pier St Helier ☎ 732229/721307

Royal Channel Islands Yacht Club, St Aubin

☎ 741023/747783

St Catherine’s Sailing Club www.scsc.org.je

Fuel Add:

Elizabeth Marina, PC Boat Sales

☎ 737537/07797723090

Gorey Marine Fuel Supplies ☎ 07797 742384

Page 113 Jersey St Helier Harbour plan

Delete fuel point symbol on elbow of South Pier.

Page 114 Jersey St Helier Harbour

TRAFFIC CONTROL SIGNALS

IALA signal lights are now exhibited on Elizabeth Harbour W wall in addition to VTS Port Control Tower.

Amber Fl discontinued.

Page 116 Jersey St Helier Harbour

Elizabeth Marina

Fuel PC Boat Sales ☎ 737537/07797723090

Page 117 Jersey St Aubin Harbour, Harbour facilities

Boatyards and chandlers Should read: ‘Jackson’s Yacht Service on the Bulwarks.’

Page 119 Jersey Portelet Bay At end of section add:
Portelet Bay Café (☎ 728550)

Page 122 Jersey Plan - Approaches to Gorey
La Giffard buoy should be Le Giffard. Now lit Fl.R.3s.

Page 126 Jersey Gorey to Grosnez Point (E-W)
Add 'Northabout' to end of the above heading.

Page 130 Jersey Grève de Lecq
Photo Change 'Hotel des Pierres' annotation to
'Apartments'.

Transit J37. New image below. Caption: J37 182° The tower is open left (E) of lefthand edge of Prince of Wales Hotel by its width.



Transit J38 New image below. Caption: J38 205° The tower is aligned with the middle of the apartments and the road is seen almost on end.



Page 131 Les Ecréhous and Plateau des Minquiers
Local Information

Add: Jersey Coastal National Park

All Jersey's offshore reefs are recognised as wetlands of international importance and the main islands are part of Jersey's Coastal National Park Area. Visitors are asked to keep well away from nesting birds and to not interfere with any local wildlife, including plants. A 5 knot speed limit applies within the reefs.

Page 132 Les Ecréhous St Helier Harbour
Add: States Mooring 49°17'39N 001°55'58W

Page 137 Les Ecréhous and Plateau des Minquiers
Les Demies (Demics) Sandbank

This section (3 paragraphs) to go to p.139 after heading Approaches to Maîtresse Ile (The Pool). Rename and reword as follows:

Caution - The Sandbanks

Approaches to The Pool are encumbered by drying sandbanks and arrival is not recommended or may not be possible below half tide St Helier.

The Northern approach (line M3) involves clearing the sandbank around Grune Tar bn and was drying approximately 3-5m in 2016 having moved E to obstruct the channel.

Final entry to The Pool is limited by depth over the smaller bank around Les Demies (Demics) S of Maîtresse Ile. This dries approximately 3-4m. The cautious limit for crossing this is may be extended to 4 hours after HW or even LW at Neaps depending on draught.

Pages 138 & 139 Plateau de Minquiers Approaches to Maîtresse Ile plan and text
Demie de Vascelin buoy is lit Fl.G.3s.

Sandbanks update 2015

The sandbank E of Grune Tar bn has moved E onto approach line M3 where it dries approximately 3.5m. The smaller Demies (Demics) bank S of Maîtresse Ile on line M4 has moved SW and dries approximately 3-4m.

Page 139 Plateau de Minquiers

Approaches to Maîtresse Ile Insert new image. Caption: Récif Le Coq bn looking W (see entry in supplement 'page 15 Coq passage')



Amend subheading to read Northern approach (drying approximately 3-5m)

Delete paragraph beginning 'In September 2005...'

II. The Cherbourg Peninsula

Page 147 St Vaast-La Hague

Plan and waypoint box Change Ⓢ40 to Ⓢ40C.

Page 150 Barfleur Supplies and Services

Amend: Restaurant du Phare ☎ 02 33 54 0082

Page 155 Minor Harbours and Anchorages between Barfleur and Cherbourg Transit T2

Change bearings from 285° to 281° and 106° to 101°.

Page 157 Port du Cap Lévi Plan & By night

Light range now 17M.

Amend lights to:
Fwd: Oc(3)12s8m10M
Rear: Oc(3)R.12s3m7M

Sea Amend Brittany Ferries phone number to 02 33 88 44 88

Page 162 Cherbourg Approaches and Entry

From West By Night Head of Digue de Querqueville is now Fl(2)G.6s6M.

From East Images should be reversed: top is a stern view from line CHB1. Lower is transit CHB1 189° (marks not visible).

Berthing Delete ‘...or on moorings.’ (There are none.)

Moorings The moorings in the N part of the marina have been removed.

Tidal Information After sentence ending ‘...above half tide.’ add: ‘The marked channel dries 4–4.5m.’

Yacht Club de Carteret ☎ 02 33 526073
Taxi: Taxi de la Côtes des Iles ☎ 02 33 04 61 02
Boatyard and chandlery: Carteret Marine ☎ 02 33 012001
(delete Acastillage Diffusion).

St Helier Créperie should be St Hétier Créperie.

First line of text should read ‘...a channel through the low dunes.’

The last sentence of the left-hand column should read C13, not C3. Add: 'See plan p.188.'

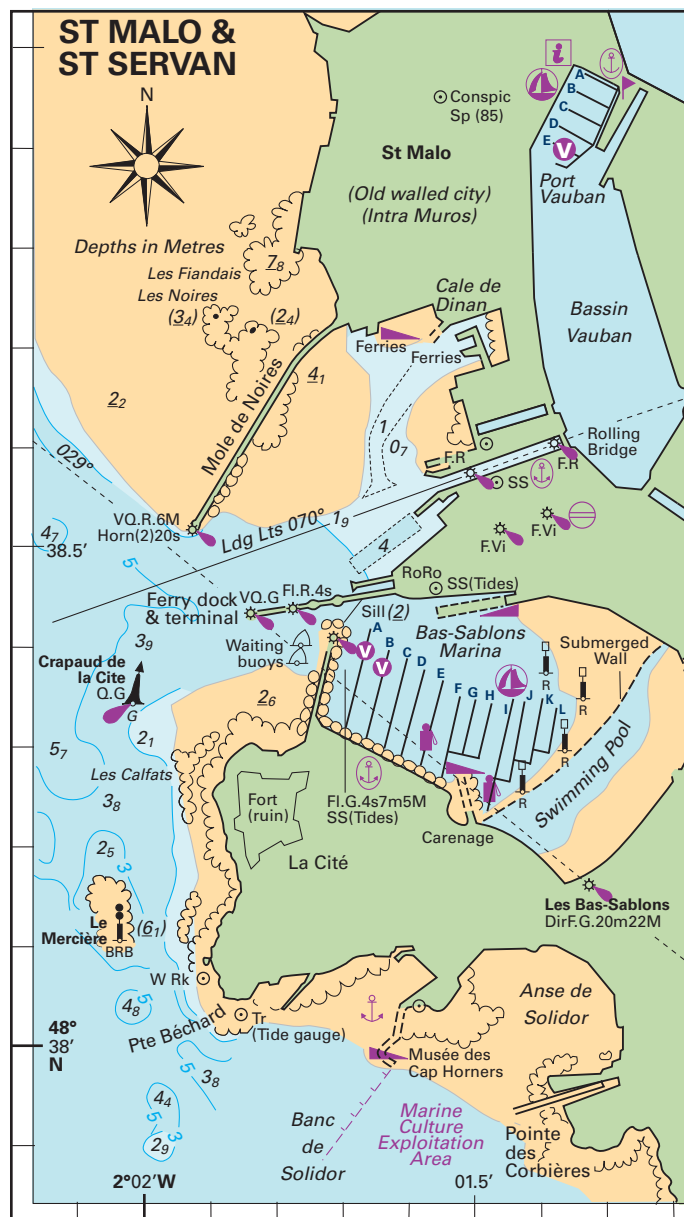
Page 201 *Cancale to Trégastel-Ste Anne*
Add '(80M)' to title.

The Coastline Final sentence should read ‘To the South is Ploumanac’h, showpiece of La Côte de Granit Rose with a small deepwater basin, and the beach resort of Trégastel-Ste-Anne.’

List of Ports Add: St Cast 229

Page 212 *Approaches to St Malo, St Servan, Dinard and La Rance* Chenal du Décolle Add '(W-E)' to the heading.

SM8 Reword final paragraph starting 'When the tip...' to: 'With Le Pierre aux Bars starboard bn on the quarter, alter course to 094°. This is the most easterly of two starboard bns off Point du Décolle.'



See plan above for new layout of berths at Port Vauban.

Port Vauban Marina change of layout: Visitors are now accommodated on new pontoon E at S end of marina.

Add to **Note** after ‘...July and August’: ‘and at other times. It is recommended to call the Barrage (ch 13) to check opening time before approaching the lock.’

Restaurants Add: In village opposite church:

Les Causettes ☎ 02 96 86 89 86

La Gargotte ☎ 02 96 86 99 87

Restaurant (on quay) name change to Le Livet Gourmand
 ☎ 02 96 41 45 48

Port de Dinan After **History** add sub heading and note:
La Rance to Biscay via inland waterways This 140M route across Brittany follows Canal d'Ille-et-Rance and R Vilaine. It consists of 60 locks and minimum depths of 1-2m with headroom of about 2-5m. See *Inland Waterways of France* David Edwards-May (imray).

Page 229 St Cast Berthing**Supplies and services****Marina:**

Visitors moorings Pontoon D marked V. Carénage (drying out) Pontoon F inner end.

~~Restaurants Le Petit Mousse 02 96 41 96 34~~

~~Les Halles 02 96 41 65 01~~

~~La Marinière 02 96 41 86 14~~

Marina: Le Café Face 02 96 41 65 62

Town: Les Halles 02 96 41 65 01

La Marinière 02 96 41 86 16

Port du Châtelet, St Jacut-de-la-Mer

Third para, penultimate word should read 'exit', not 'exist'.

Page 234 Erquy From the W (S of Rohein)

Plateau des Portes d'Erquy is marked by N cardinal tower l'Evette, not S cardinal as stated.

Page 235 Dahouët Photo

Lighthouse name should read 'La Petite Muette'.

Page 248 Paimpol Main approaches to Paimpol, Ile de Brehat & Lézardrieux plan

Chenal de la Jument should be 262°.

Plan Chenal du Ferlas

Lel-ar-Skev S cardinal buoy should be spelt Lel-ar-Serve in line with French SHOM publications. British Admiralty publications refer to it as Lel ar Skrev

Waypoint latitude errors:

⊕ 107 should be 48°55'55N 02°54'92W

⊕ 108 should be 48°53'55N 02°58'28W

Page 249 Paimpol N about l'Ost Pic lighthouse

Delete paragraph beginning 'Approach l'Ost Pic...' (the author has reservations about it).

~~Alter course to 262° for Chenal de la Jument.~~

~~Add title: S of Gouayan Passage (By Day)–~~

~~Line 4: 260° should be 262°~~

PL1 262° Final bullet point: page reference for Anse de Paimpol should read 'page 252'.

Page 253 Ile de Bréhat Tidal information

Add tidal difference: HW St Helier –0025

Page 254 Ile de Bréhat Plan

(see PAIMPOL page 248 Plan Chenal du Ferlas)

Page 256 Ile de Bréhat Photo**Via Entrée du R Trieux**

Line 2: Vieille de Loguivy is a W cardinal beacon tower. (Delete 'buoy').

Paimpol Via Entrée du R. Trieux

Vieille de Loguivy is a W cardinal beacon tower.

Page 259 La Rivière du Trieux – Lézardrieux**CONTACTS**

Add: VHF Ch 09

Page 262 La Rivière du Trieux Transit L2

First paragraph: replace 'Continue to follow marks up the river to Lézardrieux' with 'Return to a heading of 218° to follow marks up the river to Lézardrieux'.

By night After 'Leading lights: Front... Back...' add

Front: Lostmor Q.RG.16m7M

Perdrix (W sector) Fl(2)WG

Page 266 Rivière du Tréguier**Tidal Streams**

Add: Inshore in vicinity of Basse Crublent buoy there is an early turn of the stream. E-going flood starts LW St Malo and W-going ebb starts HW St Malo.

CONTACTS

Harbourmaster 02 96 92 42 37 or +33 672707020

Delete: Yacht Club

SUPPLIES AND SERVICES

Electric bicycles available for hire from Harbour Office.

Restaurants Le Saint Bernard is now Ty Braise 02 96 92 20 77

Page 270 Rivière de Tréguier

Paragraph in left hand column starting 'Roc'h Dounou...', after 'Le Taureau starboard buoy' add: Fl.VQ.G

Page 273 Perros-Guirec**TIDAL INFORMATION**

~~HW differences: Roscoff +0130 should read Brest +0130~~

List should read:

HW St Helier -0100

HW Paimpol -0030

HW Brest +0130

Tidal streams First sentence should read 'Outside the Bay N of Ile Tomé.'

Plan

Le Colombier Light characteristic should read Dir.Q.28m14M.

Page 274 Perros-Guirec Photo

Beacon Tr in foreground is Gomenénou.

Page 287 Trébeurden Caution (l/h column)

Line 2 should read 'A minor deviation to Port (E)', not starboard as stated.

Page 288 Trébeurden Ile Grande**Approach from Trébeurden**

2nd para should read 'Leave the marina as soon as the gate opens and take up Chenal de Toull ar Men Melen.'

Page 297 Morlaix Chenal de Tréguier (r/h column)

Line 1 of penultimate paragraph should read 'Alter course to port on 207°', not starboard as stated.

Amend Note: '...Blanche is a port beacon tower.'

Page 299 Morlaix ML2 transit

4th bullet point: misspelling of Vieille.

Page 301 Morlaix Main image

Change caption to 'Morlaix Yacht Basin looking S'

Page 311 Roscoff Moorings

Replace first sentence with: 'The moorings at the W end of Chenal de L'Ile de Batz are discontinued 2016. The sole mooring is reserved for Department des Phares et Balises.'

Page 316 Chenal de L'Ile de Batz From E

Should read 'Follow Approaches to Roscoff from E, then pilotage from W in reverse sequence'

Page 327 L'Aber Wrac'h Upriver to Paluden

Final sentence, add: water and showers available at Le Passage.

Page 343 Melon Approaches cont.

Line 1 should read 'alter course SE', not SW as stated.

Page 344 *L'Aber-Ildut*
Plan Add Le Lieu Fl.R.2.5s

Supplies and Services Insert after 'Boatyard, Engineers on hard standing': Lanildut Marine ☎ 02 98 04 33 71

Page 345 *L'Aber-Ildut* By night
Add Le Lieu Fl.R.2.5s

Page 346 *Le Conquet*
TRAVEL
Delete 'Train'.

Page 353 *Ile D'Ouessant* Entry
Tidal Streams

3rd para, line 3 should read: '...potential overfalls on Basse du Fromveur 700m SE of Men Korn' (not SW as stated).

Lower photo

Men ar Groas (G) Starboard beacon tr is not as indicated – this is Men ar Blank (R). It is the green tr visible to its right in the view.

Page 355 *Ile de Molène*

Supplies and Services – Restaurants

Replace list with:

Chez Rachel Bar Restaurante, mobile groceries ☎ 06 85 29 92 53

Restaurante L'Archipel ☎ 02 98 07 38 56

Page 358 **Mooring** Add at end of para 'Use is regulated by La Mairie ☎ 02 98 07 39 05'

Appendix

Page 365 Tidal Streams

2 hrs after HW Dover

The equivalent at St. Helier is -5 hrs (not +5 hrs as shown)

Page 365 Waypoints

II. Cherbourg Peninsula waypoints

⊕ 74 should read 48°50'·02N 01°37'·60W

⊕ 75 should read 48°49'·30N 01°37'·20W

⊕ 107 should read 48°55'·55N 02°54'·92W

⊕ 108 should read 48°53'·55N 02°58'·28W

Page 377 Waypoints – Cherbourg Peninsula

Change ⊕40 to ⊕40C.

Page 379 Further reading

Channel Islands, Les Minquiers Add new publication:

Les Minquiers A Natural History Chambers, Binney and Jeffreys. Charonia Media 2016

Peter Carnegie
May 2017